

WESTDIEP SEA FARM

Colruyt Group develops the first commercial sea farm off the Belgian coast: Westdiep Seafarm. We start with the cultivation of Belgian mussels and aim for 2023 for the first products in the shops. At the same time we investigate the feasibility of cultivating oysters and seaweed.

Westdiep Sea Farm is located 5 km off the Belgian west coast in project zone C, as provided in the Marine Spatial Plan. In the start-up phase, one quarter of the zone is used, which will be expanded to the entire zone later.

To ensure the safety of all seafarers, we clearly demarcate the breeding area with cardinal marks and special marker buoys.

A security system, which continuously monitors the zone, has been installed.

WHY

The purpose of this map is to inform all seafarers about the location of the Westdiep Seafarm off the Belgian coast. It concerns aquaculture infrastructure, where the necessary safety measures are in place to allow safe navigation. This map cannot be used for navigation purposes.

WHAT

The farming of mussels in the open sea is an extractive form of aquaculture. This means that the shellfish get their nutrients from the seawater, so nothing is added to the ecosystem. Moreover, the Westdiep Seafarm serves as a shelter for fish and other marine life. In this way, it increases biodiversity. Cultivation is done with longline or "hanging culture" technology. Here, underwater breeding structures are attached to strongly anchored ropes and buoys.

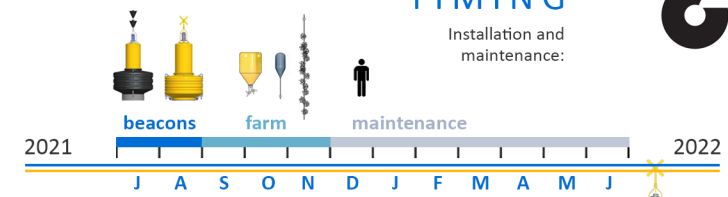
CONTACT

More information regarding this project can be found on:

www.seafarm.colruytgroup.com

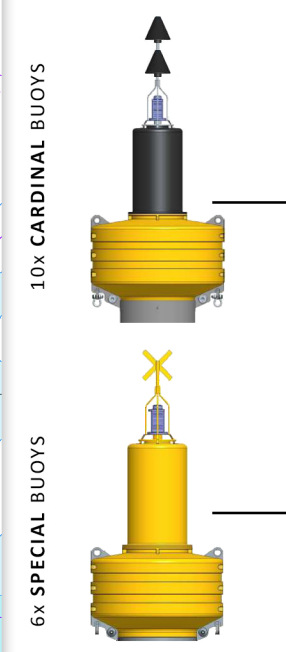
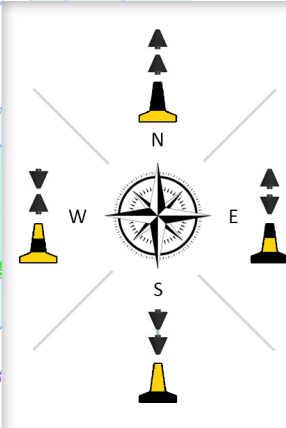
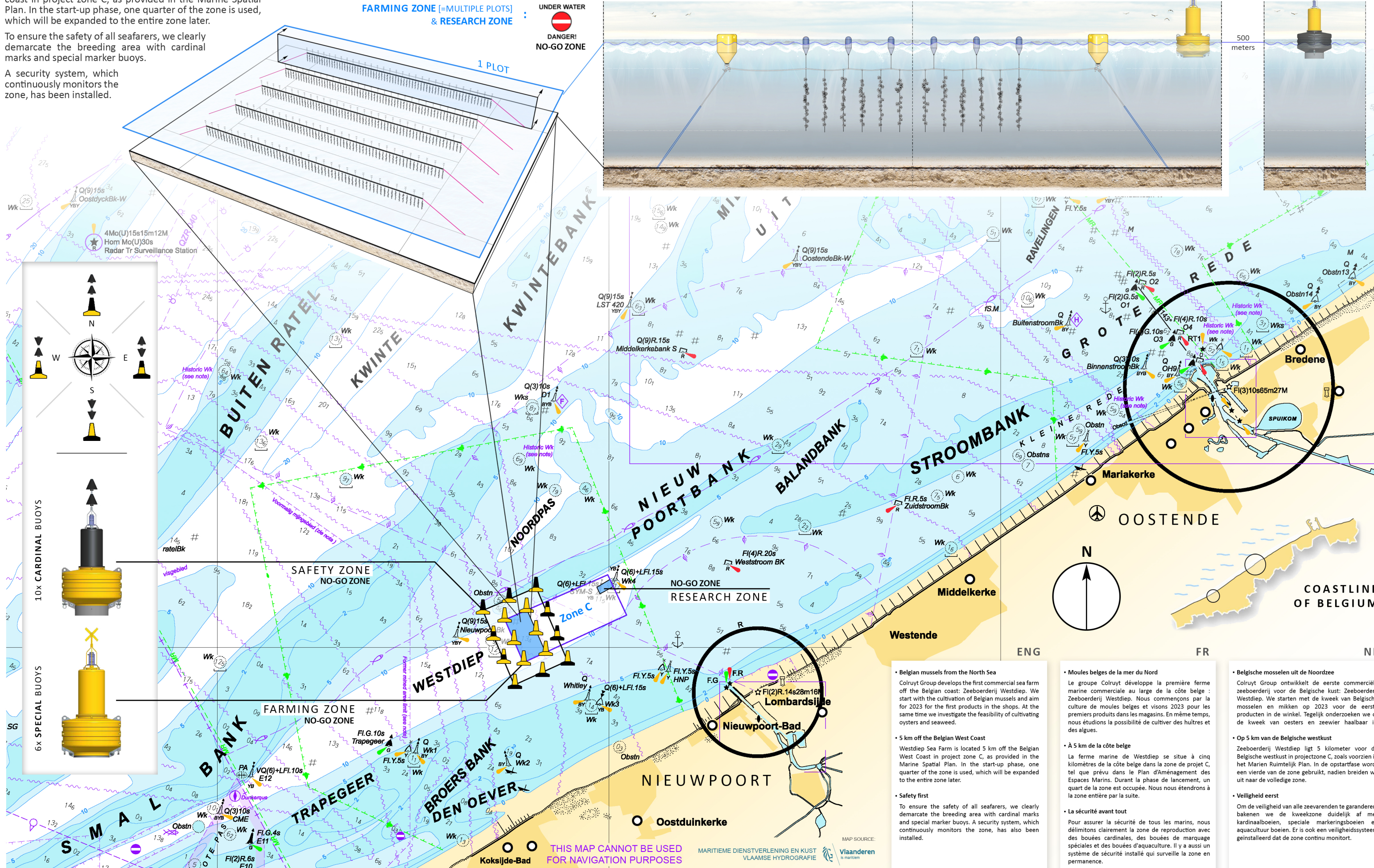
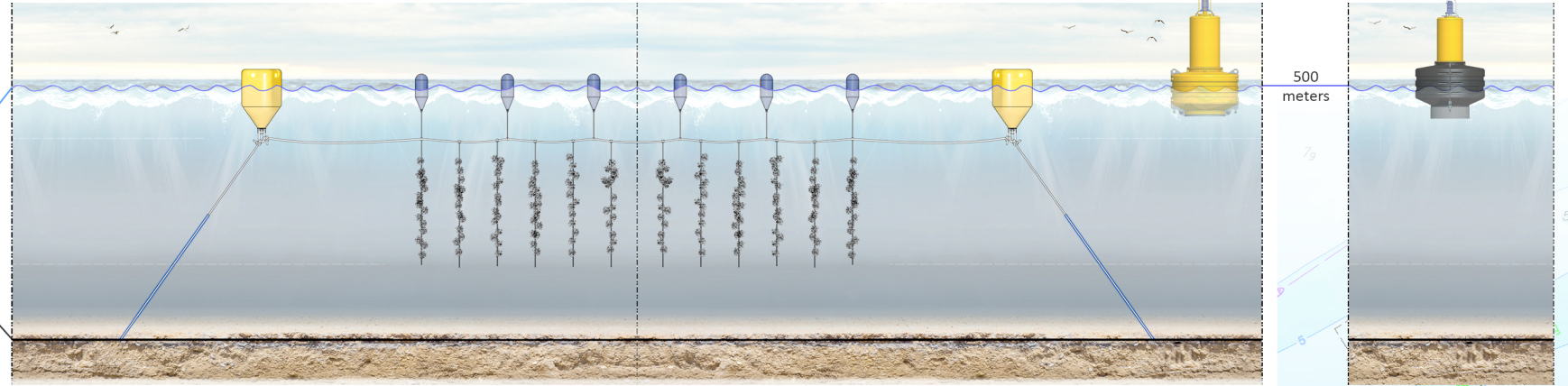
TIMING

Installation and maintenance:



FARMING ZONE [=MULTIPLE PLOTS] & RESEARCH ZONE

UNDER WATER
DANGER!
NO-GO ZONE



• Belgian mussels from the North Sea
Colruyt Group develops the first commercial sea farm off the Belgian coast: Zeeboerderij Westdiep. We start with the cultivation of Belgian mussels and aim for 2023 for the first products in the shops. At the same time we investigate the feasibility of cultivating oysters and seaweed.

• 5 km off the Belgian West Coast
Westdiep Sea Farm is located 5 km off the Belgian West Coast in project zone C, as provided in the Marine Spatial Plan. In the start-up phase, one quarter of the zone is used, which will be expanded to the entire zone later.

• Safety first
To ensure the safety of all seafarers, we clearly demarcate the breeding area with cardinal marks and special marker buoys. A security system, which continuously monitors the zone, has also been installed.

• Moules belges de la mer du Nord
Le groupe Colruyt développe la première ferme marine commerciale au large de la côte belge : Zeeboerderij Westdiep. Nous commençons par la culture de moules belges et visons 2023 pour les premiers produits dans les magasins. En même temps, nous étudions la possibilité de cultiver des huîtres et des algues.

• À 5 km de la côte belge
La ferme marine de Westdiep se situe à cinq kilomètres de la côte belge dans la zone de projet C, tel que prévu dans le Plan d'Aménagement des Espaces Marins. Durant la phase de lancement, un quart de la zone est occupée. Nous nous étendrons à la zone entière par la suite.

• La sécurité avant tout
Pour assurer la sécurité de tous les marins, nous délimitons clairement la zone de reproduction avec des bouées cardinales, des bouées de marquage spéciales et des bouées d'aquaculture. Il y a aussi un système de sécurité installé qui surveille la zone en permanence.

• Belgische mosselen uit de Noordzee
Colruyt Group ontwikkelt de eerste commerciële zeeboerderij voor de Belgische kust: Zeeboerderij Westdiep. We starten met de kweek van Belgische mosselen en mikken op 2023 voor de eerste producten in de winkel. Tegelijk onderzoeken we of de kweek van oesters en zeewier haalbaar is.

• Op 5 km van de Belgische westkust
Zeeboerderij Westdiep ligt 5 kilometer voor de Belgische westkust in projectzone C, zoals voorzien in het Maritiem Ruimtelijk Plan. In de opstartfase wordt een vierde van de zone gebruikt, nadien breiden we uit naar de volledige zone.

• Veiligheid eerst
Om de veiligheid van alle zeevaarders te garanderen, bakenen we de kweekzone duidelijk af met kardinaalboeien, speciale markeringsboeien en aquacultuur boeien. Er is ook een veiligheidssysteem geïnstalleerd dat de zone continu monitort.

THIS MAP CANNOT BE USED FOR NAVIGATION PURPOSES

MARITIEME DIENSTVERLENING EN KUST VLAAMSE HYDROGRAFIE Vlaanderen

MAP SOURCE: