

# EDR Antwerp Shipyard

Not your average essential partner in the logistic chain



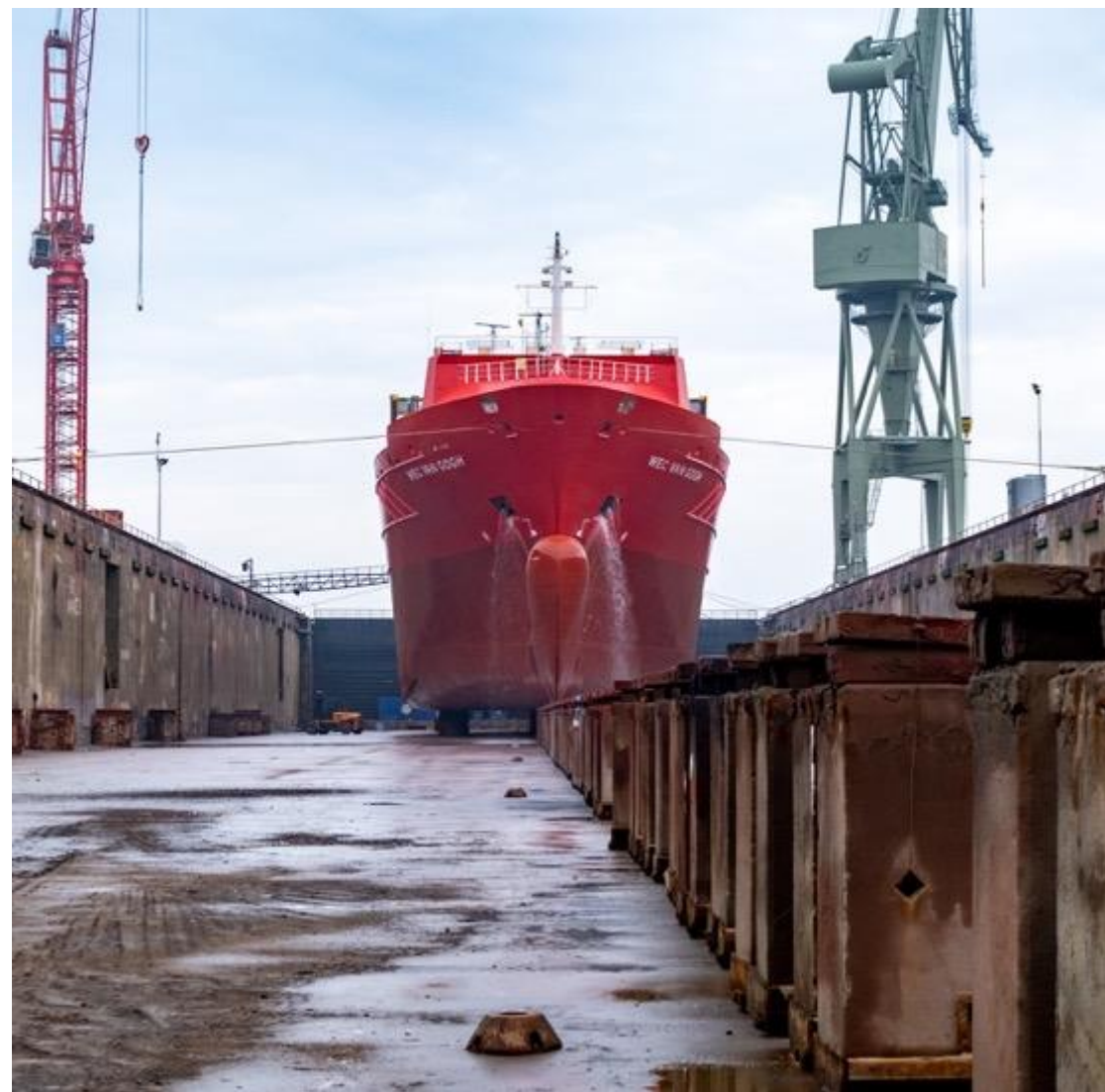


## Planning BCO Cafe

- 15u:** Ontvangst en verwelkoming
- 15u20:** Veiligheid en bedrijfspresentatie EDR
- 15u45:** Bezoek TWS – WS en Logistiek
- 16u30:** Bezoek droogdok 6 en ACL Atlantic Sun
- 17u30:** Wrap up – Q&A
- 18u00:** Networking drinks Gaarkeuken 110
- 19u30:** End

## SAFETY

23/09/2022



Excelling in shipyard industry, creating long-term partnerships with all our stakeholders, driven to increase **value** to their core business and to reduce the environmental footprint in the shipping industry





# LARGEST SHIPYARD IN BELGIUM – KEY FIGURES

4 engraved drydocks - capacity up to  
**312 \* 52 \* 8 m**

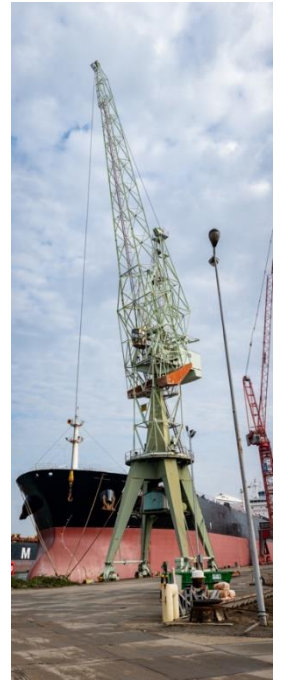
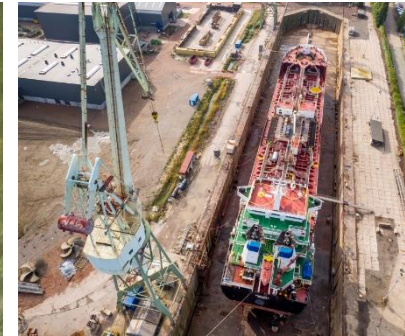
**2.000 m** private repair berth  
lifting capacity **100 ton**

**14.000 m<sup>2</sup>** workshop area

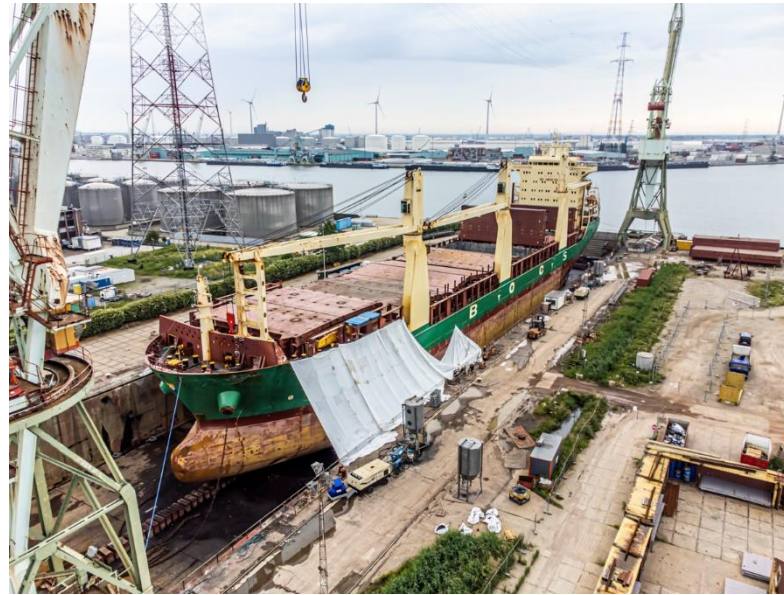
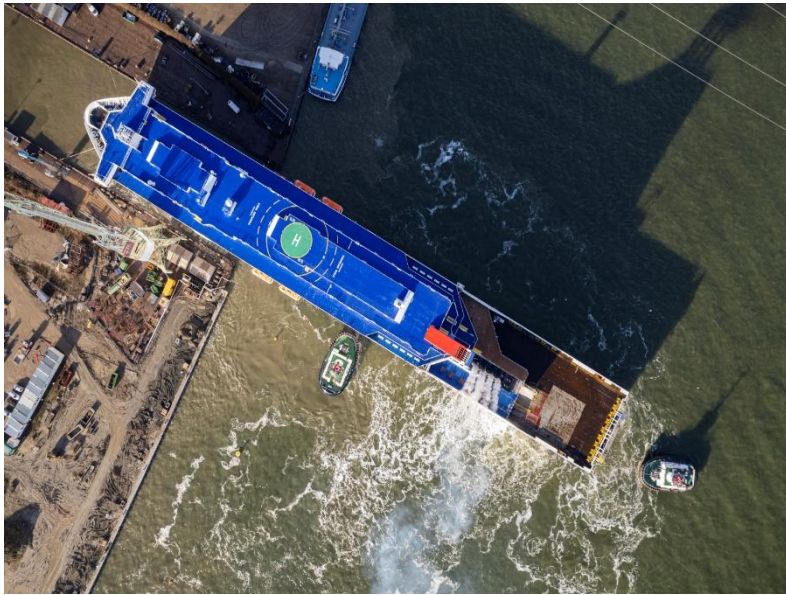
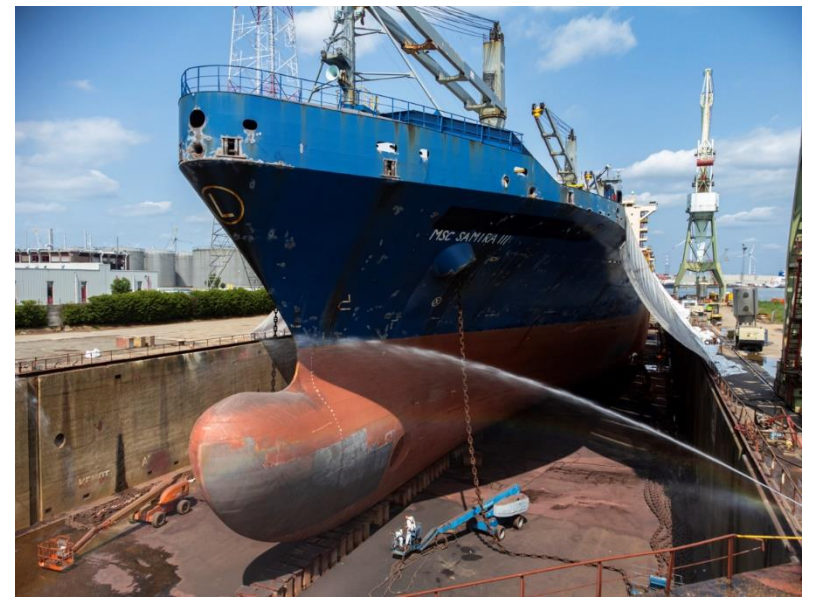
Covered storage area **16.000 m<sup>2</sup>**

**80.000 m<sup>2</sup>** open storage area and  
landing facilities

**130 FTE** and **350** dedicated subco









# LARGEST SHIPYARD IN BELGIUM / STATS ANNUM



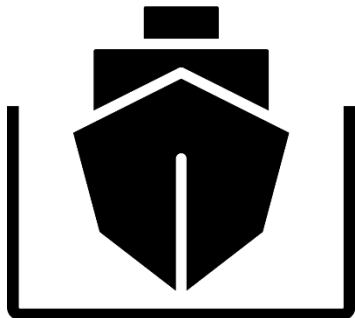
**REPAIR  
BERTH**

**150**



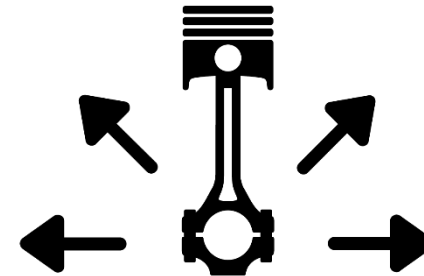
**SHIP REPAIR  
AT TERMINAL**

**1.500**



**DRY DOCK**

**50**



**SPARE PARTS  
DISTRIBUTION**

**130.000**



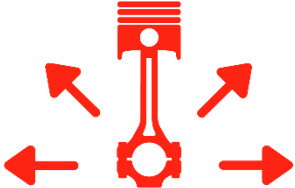
ISO 2015:9001 certified  
EU Social law compliant



# SERVICES




**SHIP REPAIR  
AND MAINTAINANCE**



**SPARE PARTS  
DISTRIBUTION**



**TECHNICAL  
SUPPLIES**



**INLAND**



**EDR TURBO**



# **SHIP REPAIR & MAINTENANCE**

# SHIP REPAIR & MAINTENANCE



All drydocking projects

Port repairs & planned maintenance

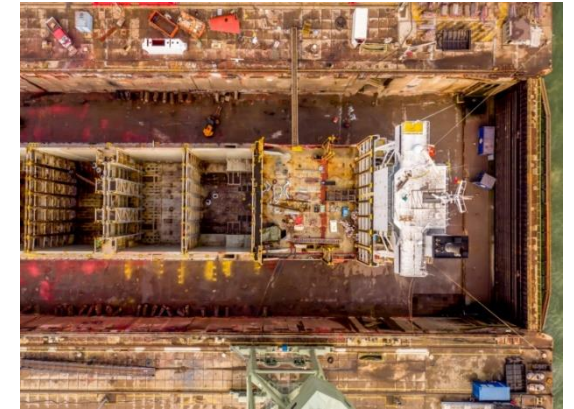
Conversion

- Ballast Water System
- Scrubber installation and activation
- Propellor Retrofit

Riding squads

Marine and Industrial construction

# YOUR SHIP – OUR CARE



Lifting capacity up to 100 ton

All blasting methods up to Sa 2.5 including UHP Dockmaster Robots

Dedicated landing area for hatchcover treatment



# WORKSHOP



Plasma cutters

Hydraulic presses and guillotine shears

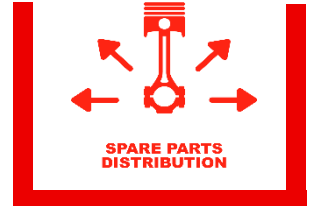
Modular pipe and profile cutting machines

MIG, TIG and arc welding machinery, certified welding engineers

CNC & conventional lathe machines, milling machines, valve stem grinding, valve seat cutters, honing machines,...

# **SPARE PART DISTRIBUTION**

# SPARE PART DISTRIBUTION



Worldwide distribution of marine- and technical spare parts

16.000 m<sup>2</sup> covered storage area 80.000 m<sup>2</sup> open storage and project area

Bonded & IMO warehouses

Own equipment and transport





# **TECHNICAL SUPPLIES**

# TECHNICAL SUPPLIES



Specialized in all marine technical parts and supplies

Excellent cooperation with EDR projects and 3rd party requests

Close proximity to all suppliers



# INLAND



# INLAND EXPERTISE



## Hull Treatment

- Blasting&Painting
- Markings

## Propellor and tailshaft repairs

- All propellor types
- Repair and adjusting

## Steel works

- Repair&conversion

## Cleaning activities



# EDR TURBO

# EDR TURBOCHARGER



Technical services all Turbochargers

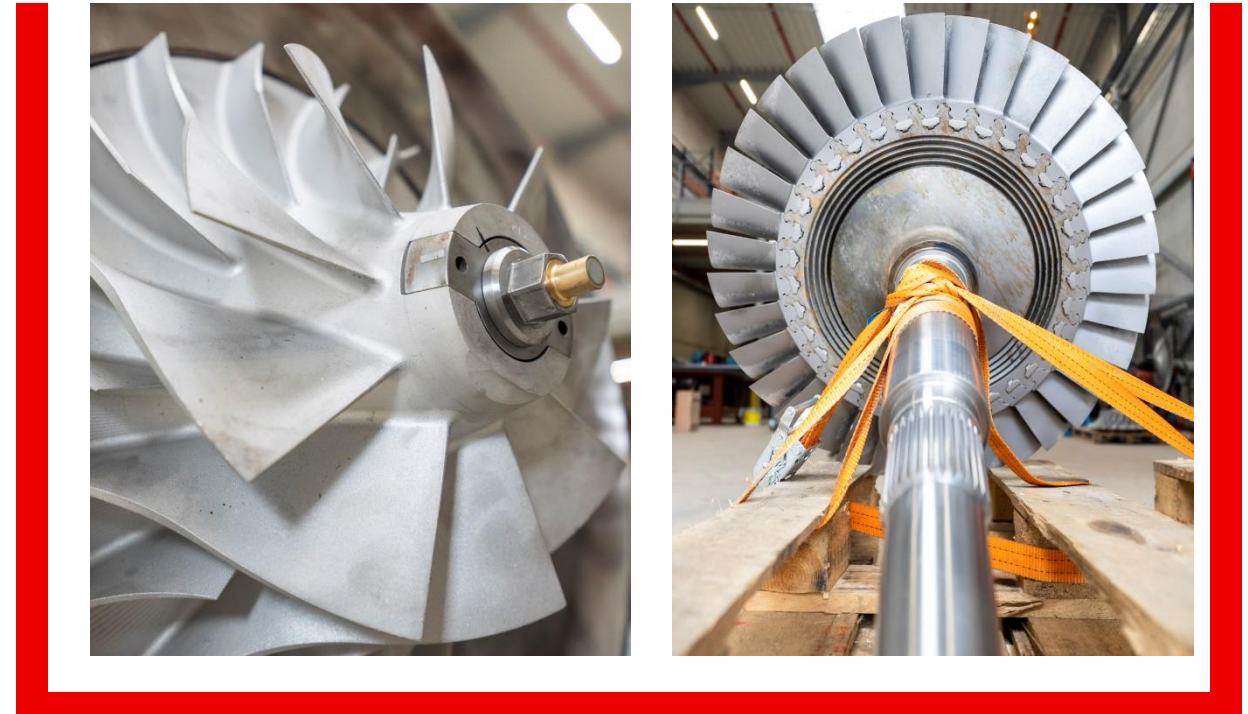
Repair minded

Customer satisfaction driven

Transparant offer, clear reporting

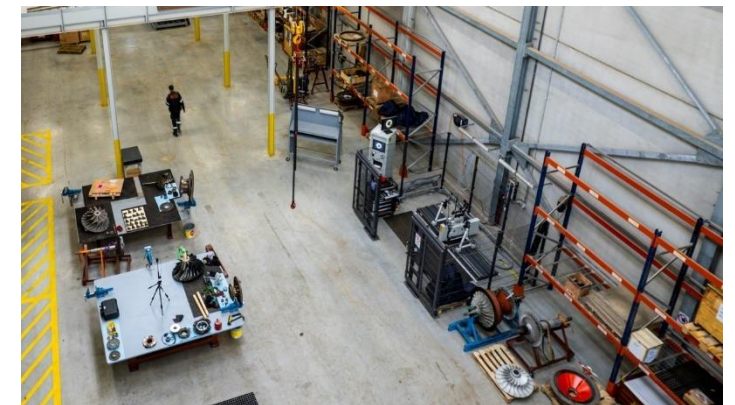
Efficient and skilled interventions

Lumpsum prices





# EDR TURBO WORKSHOP



State-of-art fully equipped with latest special tools:

- Calibrated & certified Schenck balancing equipment and measuring tools
- Certified hoisting equipment

Ultrasonic cleaning and shotblasting on site

Factory trained TC specialist with over 20 years of experience!



**Emergency 24/7**  
**+ 32 475 20 35 35**

Industrieweg 11 - Quay 403 – B  
2030 Antwerp – Belgium  
Email: [general@edr-antwerp.eu](mailto:general@edr-antwerp.eu)

[www.edr-antwerp.eu](http://www.edr-antwerp.eu)

